

## STAWELL Trip Report – March 2020

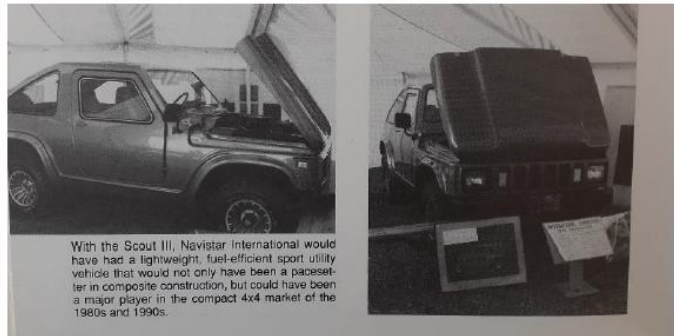
### STAWELL Machinery display.

With all that was going on a lifetime ago with the Chinese virus, in the



April/May period which seems a lifetime ago, I missed out on letting people know about the March meeting so here is what we got up to. There were 14 present at the March meeting, the date was chosen because there was a machinery/craft weekend

planned for the area at the Stawell Harness Racing Club. Because it was at the start of the Chinese virus scare there were only small numbers onsite and it was blowing a gale. The tractor pull was in progress and worth a look with the various size ranges pulling the sledge, a lot of strain on some old machinery. Some of the bigger oldies had some grunt and were heavy so got quite a bit of grip. There were craft stalls for the partners and also people selling the normal tools, books, records, DVDs etc. I did see in one book a picture of what was called the Scout 111 which was the prototype that ended up being canned due to what I believe were financial and union issues at the International factories.



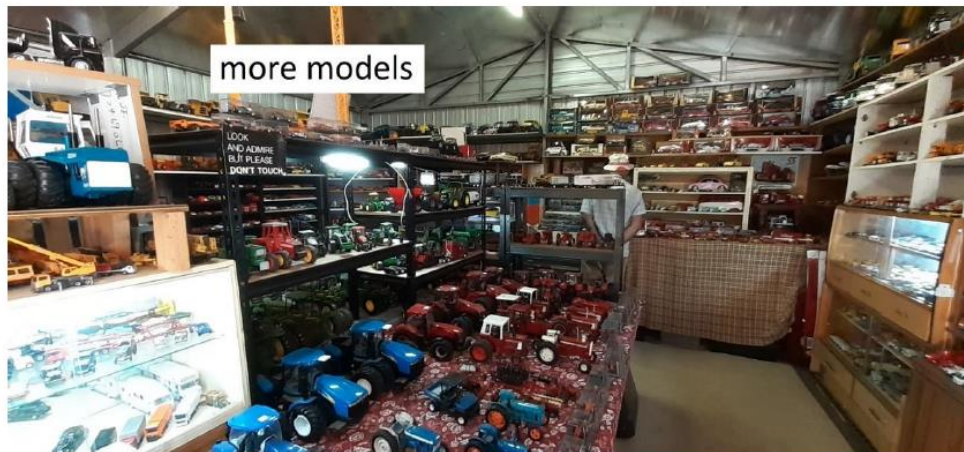


When we were leaving the caravan park we stopped at the home of a member of the Machinery display group who had a shed full of models. It was certainly a shed full and there were an untold number of models from cars to trucks to tractors. I have never seen so many

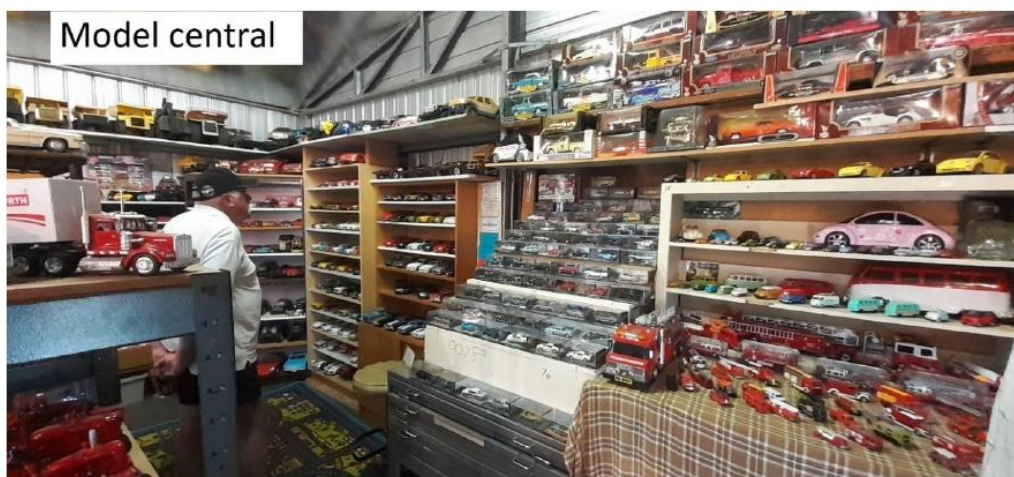


Drivable IH W7 model

models in one place and I even found a model of a vehicle that I had been chasing for a while and had been told no one made that particular model. He would not sell me the model but I was able to get all the details off it as he had the box and have since bought one myself.



more models



Model central



You name it and there was a model in the shed.



If it is not RED leave it in the shed